

A woman is seen from behind, sitting on a boat. The sun is low on the horizon, creating a warm, golden glow. A seagull is flying in the sky. The boat's railing and part of the seat are visible in the foreground.

**THE ADVENTURE YOU'VE  
BEEN WAITING FOR**

**AXOPAR**

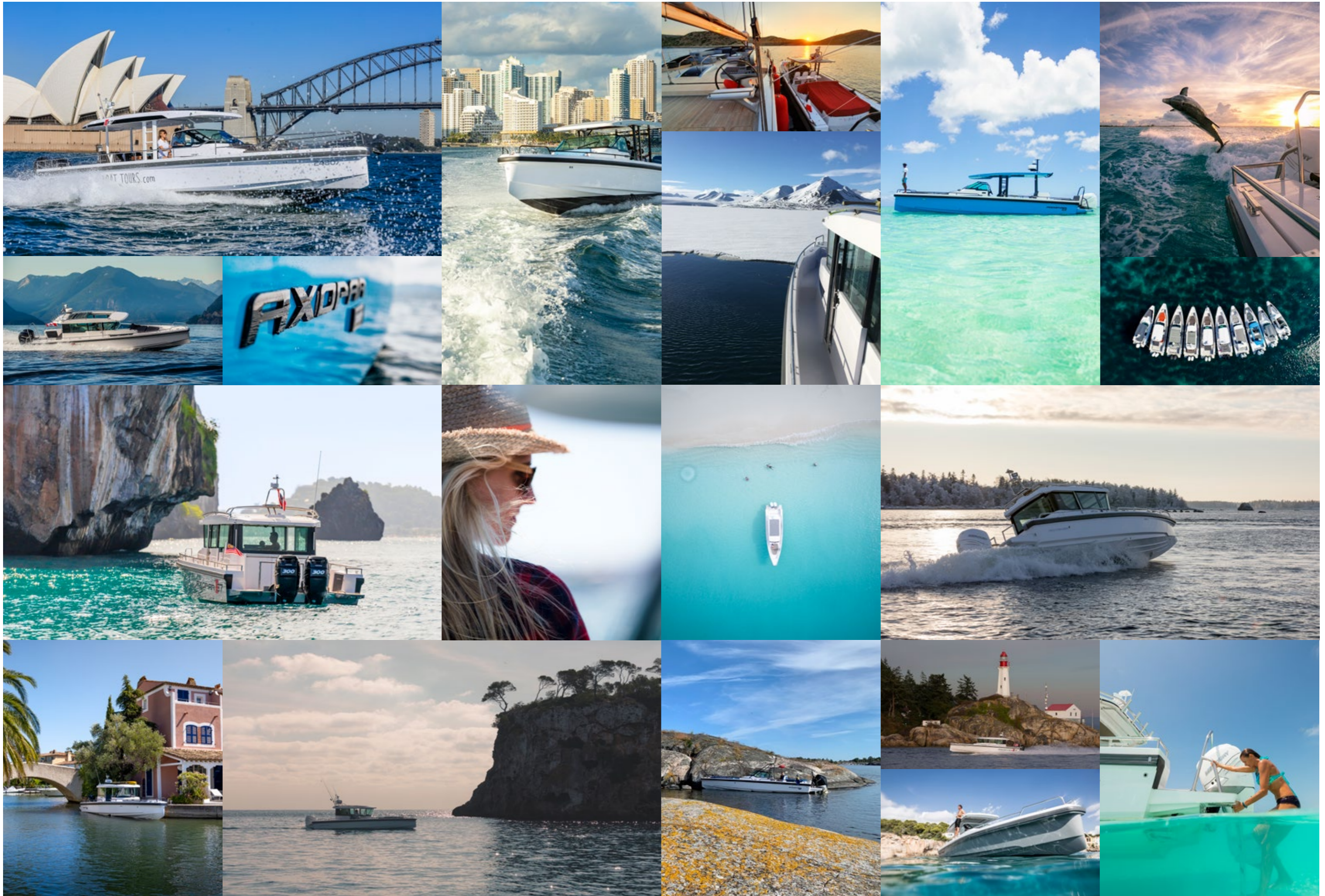
## LET THE ADVENTURE BEGIN!

At Axopar, we believe in redefining modern boating. Our concept is to provide well-made, competitively priced, safe and accessible boats. We aim to blend a perfect combination of exhilarating driving experience, sensible fuel economy, true social comfort and high functionality. We provide boats that are immediately recognizable, with a high WOW-factor, cutting-edge looks and outstanding drivability. Whether you're a seasoned and experienced boat owner, or you're a novice to boating life, there's an Axopar model for every kind of adventure. Our full range enables coastal or offshore cruising, perfect for water sport activities and the marine lifestyle, all whilst satisfying your practical boating needs.

### ONE BOAT, ONE WORLD

Developing boats that appeal to customers from different parts of the world is important, whilst at the same time challenging for us and our 'One-boat, One-world' philosophy. Our boats suits all market needs, climates and different uses all around the world, which is made possible due to our modular deck configurations and vast array of options.







*The Axopar range is the result of our long time experience and passion for boating. Designed and developed by true boating enthusiasts for the quality conscious boater who want to explore the world.*

# AXOPAR 37 MODEL RANGE



---

Axopar 37 Spyder Page 10

---

Axopar 37 Sun-Top Page 20

---

Axopar 37 XC Cross Cabin Page 30

---



## AXOPAR 37 SPYDER

You love the feeling of driving a very competent, open speedboat with fantastic grip and handling that provides an extremely compliant ride. You prefer to the wind in your hair having great all-round visibility, and the opportunity to be at one with your surroundings.

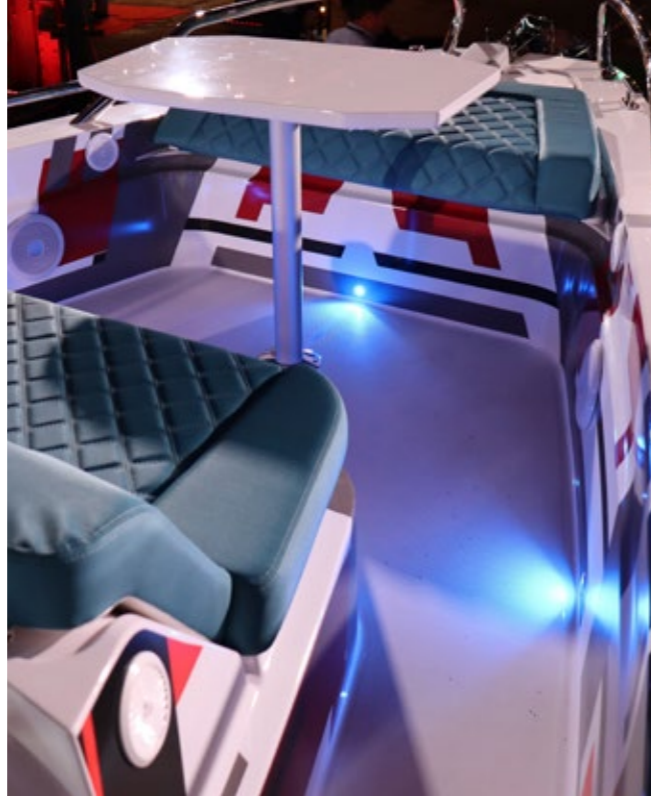
The Axopar 37 Spyder is a trendsetter, an exciting dive-excursion boat, a wakeboarding or water-ski boat and your true playmate for blasting offshore by enjoying the user-friendly characteristics and safe, responsive nature. The Spyder features a functional walkaround deck, with plenty of aft-deck space, a huge multi-functional storage solution combined with a sun-deck\*. The Axopar 37 Spyder is also the perfect choice for use as a tender or chase boat for superyachts. Its fast, safe and fun to drive and easy to dock and store due to its low height and weight compared to other 37 footers!

The Axopar 37 Spyder is a true competitor to RIB's and open speedboats but with so much more space for socialising, safer passages and extraordinary comfort. The Spyder is a boat that keeps on giving, not just for high-speed pleasure and undiluted fun, but it's a boat that will satisfy the senses even when lying at anchor and with an easily mounted light-weight sun-shade providing shelter from the sun in the cockpit area.

*\*Sold as optional equipment*



*Dealers from all over the world gathered for the International Press and Dealer launch of the Revolutionary new Axopar 37 held in November 2019 in Helsinki.*



*Foredeck seating gives room for a quiet conversation under the stars with your favourite captain. Or just enjoy the breeze and scent of the sea.*



A completely new solution to boats – the Gullwing Door concept is introduced as an extension to the front cabin. An entirely new space experience that completely redefines how an enclosed front cabin can be best utilised to provide a more sociable feeling, and full interaction with one's surroundings, making the front cabin feel like it's part of the outdoors





*Presented with optional comfort package and gullwing doors, which give an entirely new space experience, a more sociable feeling and full interaction with one's surrounding.*



*Through new intuitive solutions, the driving experience is brought even closer to the ease and simplicity of driving a car. The driver-focused ergonomic helm, with its clean and uncluttered dashboard, ensures the skipper will always remain confident and in control when handling the boat, even single-handed.*





# 37 SPYDER SPECIFICATIONS

## LAYOUT ALTERNATIVES FOR AFT DECK



As standard the Axopar 37 Spyder comes with a spacious open aft deck equipped with an aft facing perch. The aft deck can be equipped with an optional wet bar module, aft cabin or a multi storage compartment.

## TECHNICAL SPECIFICATIONS

Overall Length (excl. Engine)	11,5 m / 37ft 9in	Construction	GRP
Beam	3,35 m / 9ft 8in	Classification	B - Offshore / C - Coastal
Draft to props	0,85 m / 2ft 9in	Max speed range	40-50 kts
Weight (excl. Engine)	3.390 kg / 7.474 lbs	Max cruise range	300 nm (2x 300hp Mercury V8, 30 knots)
Passengers	B:10 - C:12	Outboard engines	2 x 225 - 2 x 350hp
Berths	2 (+2)* persons	Fuel consumption, cruise	2,3 l/nm (2x 300hp Mercury, 28 knots)
Fuel capacity	730 liters / 193 gal	Hull design	Twin stepped 20 degree V "Sharp entry bow"

*\* Only w. optional aft cabin*

Specifications may be changed without prior notice. Performance may vary due to equipment, weather and load conditions.

## AXOPAR 37 SUN-TOP

The Axopar 37 Sun Top with its multi-purpose characteristics when launched in 2016, immediately proved itself to be a perfect combination of open and enclosed boating.

The new 37 ST version, however, with its full-length shaded roof, is loaded with a myriad of innovative functionality and creature-comforts. The extended roof offers the best shade and weather protection possible; this without compromising on the space and versatility of the walkaround sides and aft-deck area. The optional new roof-rack and multi-storage compartment gives you the possibility to bring and transport all your adventure gear with you.

Of course, the 37ST has more than enough versatility for enjoying all day long hospitality and all kinds of water-sports fun but also to mix the perfect boating cocktail by adding friends and family. It is in every way a long-distance comfortable passage-maker. Its impressive driving characteristics, enclosable\*, protected helm and clever design allows for even wider, multipurpose usability and comfort.

*\*Sold as optional equipment*



Dealers with their smart phones up in the air, ready to catch the first glimpses of the new Axopar 37 ST in Miami Blue during the dealer launch. The Foo Fighters' "All My Life" plays in the background whilst the cover is whisked off to offer an unforgettable launch experience for everyone.



The 37 ST is perfectly sociable, with enough seating for bridge, poker or a good lobster dinner with friends. Just sit back enjoy the day's catch or the captain's cruising.

The driver-focused ergonomic helm, with its redefined ergonomics, contribute to a supremely practical and functional layout. Both forward and all-round visibility are improved, whether standing or seated in the newly designed, extra-grippy seats.





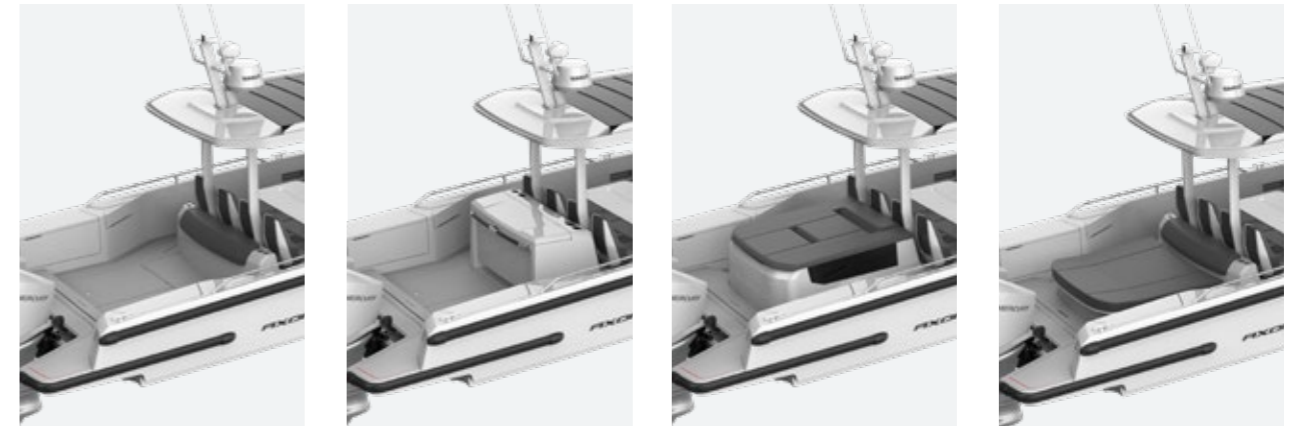
*If you really want to stand out of the crowd choose the optional ultra-cool Revolution camouflage wrap*





# 37 SUN-TOP SPECIFICATIONS

## LAYOUT ALTERNATIVES FOR AFT DECK



As standard the Axopar 37 Sun-Top comes with a spacious open aft deck equipped with an aft facing perch. The aft deck can be equipped with an optional wet bar module, aft cabin or a multi storage compartment.

## TECHNICAL SPECIFICATIONS

Overall Length (excl. Engine)	11,5 m / 37ft 9in	Construction	GRP
Beam	3,35 m / 9ft 8in	Classification	B - Offshore / C - Coastal
Draft to props	0,85 m / 2ft 9in	Max speed range	38-48 kts
Weight (excl. Engine)	3.590 kg / 7.915 lbs	Max cruise range	300 nm (2x 300hp Mercury V8, 30 knots)
Passengers	B:10 - C:12	Outboard engines	2 x 225 - 2 x 350hp
Berths	2 (+2)* persons	Fuel consumption, cruise	2,3 l/nm (2x 300hp Mercury, 28 knots)
Fuel capacity	730 liters / 193 gal	Hull design	Twin stepped 20 degree V "Sharp entry bow"

*\* Only w. optional aft cabin*

Specifications may be changed without prior notice. Performance may vary due to equipment, weather and load conditions.



## AXOPAR 37 XC CROSS CABIN

The new Crossover that challenges convention in both looks and onboard functionality bringing a new era to all-weather boating.

The Axopar 37 XC Cross Cabin takes you further on your journey, whether it be in the harsh cold seas of Svalbard, in the sunny and warm Caribbean or in the bustling scenes on Manhattan. Every foot on board is used for socialising and practical living; indoors and now outdoors as well, infused with a myriad of new onboard solutions and functionalities, no matter if cruising along or spending time at anchor.

Forget the old prejudice that a cabin boat is all just about spending time inside its cabin; the new Axopar 37 XC Cross Cabin raises the outer spaces to equal importance and functionality, as sociable and practical as it is comfortable inside. The innovative Gullwing Door concept\* opens up the front cabin, the sociable foredeck seating with table\* or with the large sun-deck\*, in addition with its versatile aft-deck modules ensures our customers get a boat with the equipment they want, however they spend their time onboard and wherever they are boating.

The Axopar 37 XC Cross Cabin is a the perfect platform for every adventure at sea.

*\*Sold as optional equipment*





The large sliding canvas roof, together with the two large sliding doors, really opens up the cabin to the elements on days when the weather allows. Redefined ergonomics contribute to a supremely practical and functional layout, with a raised floor for improved forward visibility, while still being allowing the skipper to manoeuvre the boat in a standing position. Even when alone, the practical layout and driver-focused features ensure that the skipper will always remain confident and in control when handling the boat single-handed.





*Every foot on board is used for socializing and practical living, infused with a myriad range of new onboard solutions and functions. New windows and door designs give more light into the cabin and an even better feeling of space.*



*The front cabin is significantly enlarged, with 30% more space than its predecessor, now with the option of a fully enclosed toilet compartment. It is more spacious, bright and accommodating than ever before, giving you a new level of living comfort.*

*Optional aft cabin for accommodating two additional passengers onboard, now even more comfortable and spacious than before.*





# 37 XC CROSS CABIN SPECIFICATIONS

## LAYOUT ALTERNATIVES FOR AFT DECK



As standard the Axopar 37 XC Cross Cabin comes with a spacious open aft deck equipped with an aft facing perch. The aft deck can be equipped with an optional wet bar module or an aft cabin which allows for additional 2 overnight guests.

## TECHNICAL SPECIFICATIONS

Overall Length (excl. Engine)	11,5 m / 37ft 9in	Construction	GRP
Beam	3,35 m / 9ft 8in	Classification	B - Offshore / C - Coastal
Draft to props	0,85 m / 2ft 9in	Max speed range	38-48 kts
Weight (excl. Engine)	3.770 kg / 8.311 lbs	Max cruise range	250 nm (2x 300hp Mercury V8, 30 knots)
Passengers	B:10 - C:12	Outboard engines	2 x 225 - 2 x 350hp
Berths	2 (+2)* persons	Fuel consumption, cruise	2,3 l/nm (2x 300hp Mercury, 28 knots)
Fuel capacity	730 liters / 193 gal	Hull design	Twin stepped 20 degree V "Sharp entry bow"

*\* Only w. optional aft cabin*

Specifications may be changed without prior notice. Performance may vary due to equipment, weather and load conditions.

# AXOPAR 28 MODEL RANGE



---

Axopar 28 Open Page 44

---

Axopar 28 T-Top Page 56

---

Axopar 28 Cabin Page 68

---



## AXOPAR 28 OPEN

A perfect choice even for those who have never even considered buying an 8m motorboat up until now, the 'user-friendly' characteristics and safe & responsive nature of the Axopar 28 Open version make this an ideal first-time buy.

Six, comfortable forward-facing seats in two rows with individual bolster cushions for the front row, offer more pleasurable views than boats with side-facing equivalents, and the view ahead means that everyone onboard will see, feel and experience the same kind of exhilaration as if each person was sitting behind the steering wheel!

There's plenty of aft-deck space combined with additional stowage, making this model one of our most versatile and practical options within our range. Use the Open version either as a family-fun tool for exploring beautiful coastlines and cruising undiscovered bays, or as an exciting dive-excursion boat, a wakeboarding or water-ski boat, or simply for blasting offshore to your favorite fishing reef. And from an ultra-pleasant day-cruiser to an über-cool sports weekender, why not transform your leisure boating options in an instant, by specifying our aft-cabin, comfortable overnight accommodation package. With Axopar the final choice is always yours!





*Whether it's for a siesta mid-way through the day, or those occasions when you want the convenience of sleeping on board overnight, the Aft Cabin option is a wonderful refuge at any time of day.*



The Axopar 28 Open is a spacious walk-around day cruiser with unmistakable style combined with an agile and fuel economic hull. This versatile and easy to handle craft has plenty of room thanks to its spacious configuration for sunbathing, water-sports, fishing, socialising or just cruising the coast.





*With cushions removed, the top of the Aft Cabin provides a practical work top for preparing your watersports gear or fishing tackle in readiness for another fantastic and memorable Axopar day.*



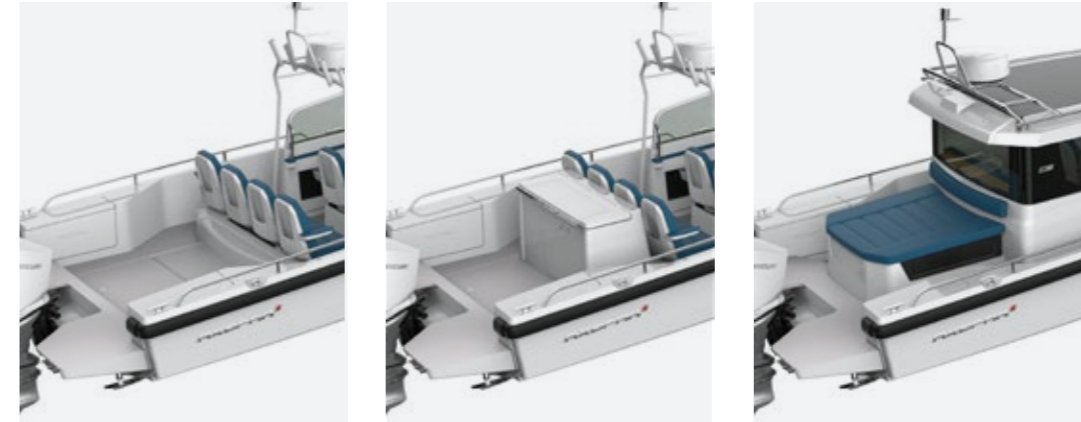
*Many of us lead busy and hectic lives and our free time is a precious commodity. That's why everything about an Axopar has been designed to let you get the most from your valuable time spent on the water.*





# 28 OPEN SPECIFICATIONS

## LAYOUT ALTERNATIVES FOR AFT DECK



The Axopar 28 Open comes with a spacious open aft deck with a large stowage hatch in the floor as standard. It can be equipped with a wet bar module including a refrigerator and sink with faucet or with an optional daycruiser aft cabin.

## TECHNICAL SPECIFICATIONS

Overall Length (excl. Engine)	8,75 m (28ft 8in)	Berths	2 persons (w. opt. aft cabin)
Overall Length incl. Bathing Platforms	9,18 m (30ft 1in)	Fuel capacity	280 l (74 gal)
Beam	2,95 m (9ft 8in)	Construction	GRP
Height (Waterline to Targa incl. Light Mast)	2,85 m (9ft 4in)	Classification	B - Offshore / C - Coastal
Height (Waterline to Window excl. Targa)	1,60 m (5ft 3in)	Max speed range	32-46 kts
Draft to props	0,80 m (2ft 8in)	Outboard engines	200 - 400 hp
Weight (excl. Engine)	1770 kg (3902lbs)	Fuel consumption, cruise	1,75 l / nm (350 hp @ 30 knots)
Passengers	B: 6 persons / C: 9 persons	Hull design	Twin stepped 22 degree V "Sharp entry hull"

Specifications may be changed without prior notice. Performance may vary due to equipment, weather and load conditions.

## AXOPAR 28 T-TOP

Sometimes having too much sun can be as unpleasant as not having enough, and Axopar thought about that when they designed the smart-thinking T-Top with large, canvas roof shade, mounted to a sturdy & permanent metal frame.

A highly versatile, multi-purpose, walkaround sports cruiser, form & function have fused together to create the Axopar 28 T-Top version, successfully screening the front and rear passengers from the less pleasant effects of too much sun. Knowing you and your guests can now spend even more time on the water means the toilet and wash-hand basin and top-loading fridge options, for example, are the kind of useful upgrades Axopar offer to make life afloat that little bit more civilized.

Ideal for those who live too far away from their boat to want to return home each night or perfect for those impromptu weekends away with your spouse or partner – our Aft Cabin option allows comfortable overnight sleeping accommodation for two, with the same space doubling as significant extra stowage capability, when not in use. For day long hospitality from a dedicated drinks serving area, our fully plumbed-in wet bar module is a clever touch that's bound to impress your friends with an end-of-day sundowner, or day-long supply of your favourite ice-cold beer!





*In just a few short moments, you'll feel relaxed, at ease and fully in-control behind the wheel of an Axopar. Responsive handling and safe mannerisms make driving this as simple and as intuitive as if behind the wheel of a modern-day car.*



*With the foredeck, the cockpit and the aft-deck to consider, the T-Top's miraculous use of space provides three different sociable zones to enjoy at any time of the day.*



The Axopar 28 T-top is the ultimate leisure boat for trips to your favourite anchorage, water sports, sunbathing or just relaxing with friends and family. This sleek walk around cruiser with a canvas T-Top features a smart optional aft cabin for two that doubles as a large sun deck and sets the stage for all the on-water activities.





The BRABUS Line Trim Package includes, for example, a suede covered steering wheel and suede covered co-pilot grab rail with discreet BRABUS logo branding. The exterior has black finish rub rails, BRABUS Line signature branding and all main exterior stainless-steel parts specific to each model (eg handrails, light mast, T-Top roof mounts etc) are finished in a matching black painted colour scheme.



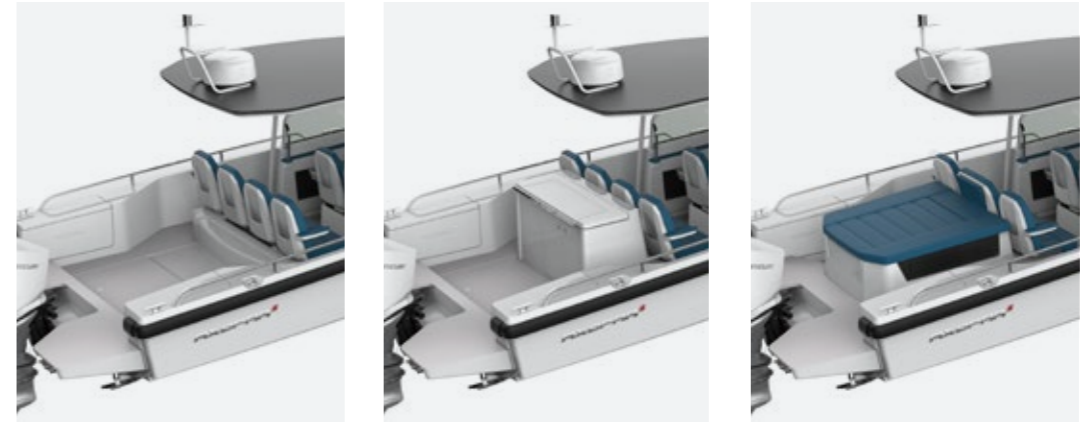
The BRABUS Line trim package adds another level of personalisation to your new Axopar. There are two additional 'duo-tone' hull colours to choose from including cool Platinum Grey and vibrant and playful Miami Blue, both contrast well with the remainder of the hull in white.





# 28 T-TOP SPECIFICATIONS

## LAYOUT ALTERNATIVES FOR AFT DECK



The Axopar 28 T-Top comes with a spacious open aft deck with a large stowage hatch in the floor as standard. It can be equipped with a wet bar module including a refrigerator and sink with faucet or with an optional daycruiser aft cabin.

## TECHNICAL SPECIFICATIONS

Overall Length (excl. Engine)	8,75 m (28ft 8in)	Fuel capacity	280 l (74 gal)
Overall Length incl. Bathing Platforms	9,18 m (30ft 1in)	Construction	GRP
Beam	2,95 m (9ft 8in)	Classification	B - Offshore / C - Coastal
Height (Waterline to Targa incl. Light Mast)	2,85 m (9ft 4in)	Max speed range	32-46 kts
Draft to props	0,80 m (2ft 8in)	Outboard engines	200 - 400 hp
Weight (excl. Engine)	1840 kg (4056lbs)	Fuel consumption, cruise	1,75 l / nm (350 hp @ 30 knots)
Passengers	B: 6 persons / C: 9 persons	Hull design	Twin stepped 22 degree V "Sharp entry hull"
Berths	2 persons (w. opt. aft cabin)		

Specifications may be changed without prior notice. Performance may vary due to equipment, weather and load conditions.



## AXOPAR 28 CABIN

Less sportsboat, more Gran Turismo, the Axopar 28 Cabin opens up a world of possibilities for extended voyages and longer average journey times and with the Aft Cabin option, this is our biggest selling model so far.

With capability of seating up to five people within a bright and airy, full weather protected environment, there's ample incentive for an owner and guests to spend not just a few hours onboard, but several days and even weeks enjoying their Axopar Cabin version to the full. The cabin does offer occasional sleeping possibilities for one or two, but customers find the Aft Cabin option is an even better solution for genuinely comfortable, dedicated overnight stays and drop-of-the-hat weekends away will soon become your boating norm.

Versatile by design, the walkaround side access and aft-deck in standard form is a large, flat and practical space that works well as a home for fishing, or water-sports activities and such-like. As with other models across our range, the aft-deck can be configured either with, or without, an additional rear-facing bench seat and storage box, or for all-day hospitality, our dedicated drinks serving area and wet-bar module option is a must. Go further and stay out longer with the Axopar Cabin.





*Cabin ergonomics are such that the console is designed in a logical and unimposing way. By adding the driver aids upgrade package including, for example, Mercury Marine's Active Trim and Vessel View, you can take advantage of the latest boat management systems for getting the most out of your boat's superb performance, fuel economy and handling.*

*Perfect for an early morning coffee, light lunch or early evening sundowner, the foredeck with L-shaped sofa and optional table is a perfect place for sitting back and enjoying every moment.*



The Axopar 28 Cabin is a multifunctional craft with modern smart lines that is fully enclosable for all weather conditions yet open for warm and sunny summer days. It features a spacious, bright and comfortable cabin with wide sliding doors and a large sliding canvas roof. The sofa inside the cabin converts into a double bed.



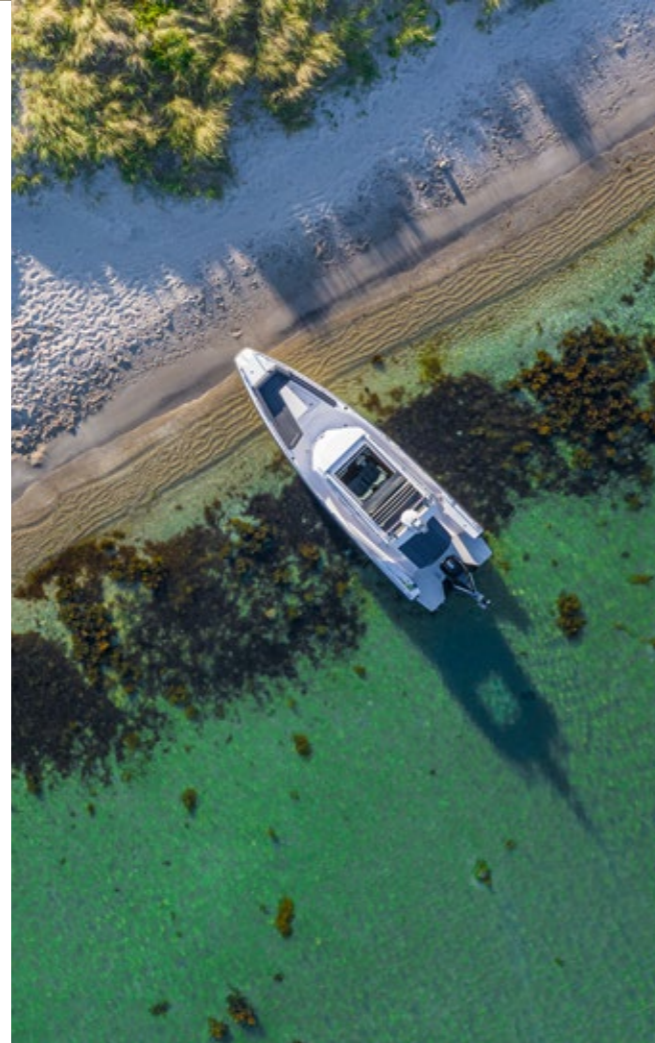


*Our wide choice of optional extras lets you configure your new Axopar to fulfil your ideal needs. Shown here nestled conveniently inside the cabin is the freshwater system with sink and faucet and toploaded refrigerator. An additional fridge space can be specified in the aft port storage compartment.*



*The 2ft 8in shallow draft enables access to all kinds of new places and offers the possibility to discover hidden beaches, bays and idyllic anchorages.*

*Driver and co-driver seats can be turned to face the sofa for entertaining guests by the optional table. This is a perfect place to socialize and to enjoy a lunch or cup of coffee with your friends.*



*Our optional toilet package, located centrally in front of the main console, is an ideal and convenient addition for those who love spending as much time as possible on board during the day and night.*

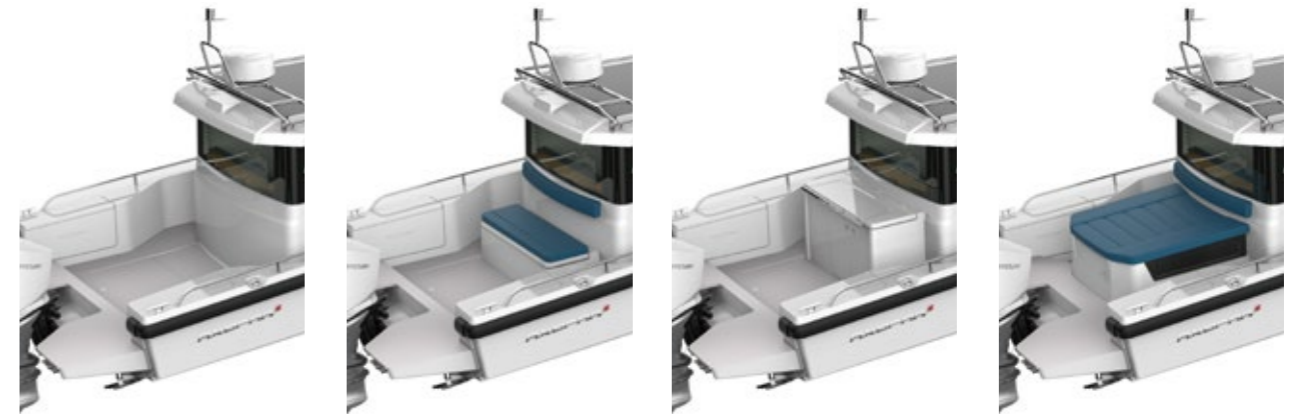


*Aft deck options shown here include the fully plumbed Wet Bar module, or the Daycruiser Aft Cabin with versatile stowage hatch (seen with and without cushions). There's also the option for a rear-facing bench/storage box, or to leave the entire aft-deck space completely clear.*



# 28 CABIN SPECIFICATIONS

## LAYOUT ALTERNATIVES FOR AFT DECK



The Axopar 28 Cabin comes with a spacious open aft deck with a large stowage hatch in the floor as standard. It can be equipped with an optional bench/storage box, a wet bar module with refrigerator and sink with faucet or a daycruiser aft cabin which sleeps 2 persons.

## TECHNICAL SPECIFICATIONS

Overall Length (excl. Engine)	8,75 m (28ft 8in)	Fuel capacity	280 l (74 gal)
Overall Length incl. Bathing Platforms	9,18 m (30ft 1in)	Construction	GRP
Beam	2,95 m (9ft 8in)	Classification	B - Offshore / C - Coastal
Height (Waterline to Roof incl. Light Mast)	2,83 m (9ft 3in)	Max speed range	32-46 kts
Draft to props	0,80 m (2ft 8in)	Outboard engines	200 - 400 hp
Weight (excl. Engine)	1940 kg (4277lbs)	Fuel consumption, cruise	1,75 l / nm (350 hp @ 30 knots)
Passengers	B: 6 persons / C: 9 persons	Hull design	Twin stepped 22 degree V "Sharp entry hull"
Berths	2 persons		

Specifications may be changed without prior notice. Performance may vary due to equipment, weather and load conditions.

# AXOPAR 24 MODEL RANGE





## AXOPAR 24 RANGE

As the saying goes: 'if it looks right, it is right' and nothing could be closer to the truth when considering the cool looks and balanced proportions of the instantly recognisable Axopar 24 range.

There are three model options available, including an Open, T-Top and Hard Top version. Each model has its own unique benefits, so your decision upon which model to buy will be based upon factors such as typical weather conditions in your region and what kind of boating you prefer to do. Customers of all age groups find their Axopar perfect for a range of different reasons. Some customers keep their boat in a fully serviced marina, other customers use their boat as a daily commuter moored at the end of their garden. Some owners love to beach their Axopar on deserted island shore, while others prefer nothing more sophisticated than being a mile or two offshore, with a beer in one hand and a fishing rod in the other!

An inherently safe design due to the unsinkability of the polyurethane foam core, these are responsive and very manoeuvrable boats that are ideal for high-energy activities, such as water-skiing and wakeboarding, or for towing your kids around on inflatable tubes and sea biscuits. Not having to rush back home at the end of a wonderful day, or having the hassle of trying to find overnight accommodation on shore is a wonderful bonus that every Axopar 24 owner will enjoy. As with every Axopar, there are plenty of practical options to configure your boat for your own personal needs.





*With its fixed seating and adjustable table / optional sunbathing area, the spacious foredeck is a key feature of the Axopar 24 range. Twin sofas in front of the helm with options to extend the bed base, add a manual flush toilet and freshwater system with sink and faucet, make this a versatile overnighter in true Axopar style.*



The 24 range boats are truly versatile bow riders with a fuel efficient twin-stepped hull and a protective and functional helm. In keeping with the rest of our model range, our well-proportioned 24 footers are every bit as thrilling and rewarding to drive as their larger siblings.



## 24 RANGE SPECIFICATIONS

### TECHNICAL SPECIFICATIONS

Overall Length (excl. Engine)	7,60 m / 24ft 11in	Fuel capacity	220 liters / 58 gal
Beam	2,55m / 8ft 4in	Construction	GRP
Draft to props	0,70 m / 2ft 4in	Classification	280 l (74 gal)
Weight (excl. Engine)	1600-1850 kg / 3530-4080 lbs	Classification	C - Coastal
Passengers	8 persons	Max speed range	35-40 kts
Berths	2	Outboard engines	150-250 hp (4 and 6cyl.)

\* Only w. optional aft cabin

Specifications may be changed without prior notice. Performance may vary due to equipment, weather and load conditions.

## THE BRABUS LINE TRIM PACKAGE

For 2020, the BRABUS Line Trim Package includes unique cockpit and cabin seat designs with diamond-stitch patterning, a suede-covered steering wheel and suede-covered co-pilot grab rail with discreet BRABUS logo branding. The exterior of the hull features black coloured rub-rails and all main exterior stainless-steel parts specific to each Axopar model (eg. hand-rails, light mast, T-Top / targa arch) will be finished in a matching black painted colour scheme.

The BRABUS Line Trim Package can be further enhanced by selecting one of our two exciting hull & roof colours: Choose from vibrant and playful Miami Blue, or a more discreet Platinum Grey. The Colour Edition is a duo-tone colour package whereby specific parts of the boat are coloured and other parts are left uncoloured in standard delivery white.





# AVAILABLE HULL COLORS

## AXOPAR 37 RANGE



Axopar 37 Spyder  
Standard White



Axopar 37 Sun-Top  
Miami Blue



Axopar 37 XC Cross Cabin  
Platinum Grey

## AXOPAR 28 RANGE



Axopar 28 Open  
Standard White



Axopar 28 T-Top  
Miami Blue



Axopar 28 Cabin  
Platinum Grey

## AXOPAR 24 RANGE



Axopar 24 Open  
Standard White



Axopar 24 T-Top  
Standard White



Axopar 24 Hard Top  
Standard White

# FABRIC COLORS

## FABRIC COLOURS FOR MY2020 BOATS

For the model year 2020 Axopar models are available in the Silvertex marine quality coated fabrics colours below. Sterling is standard in all MY2020 boats with Champagne, Storm and Turquoise as optional fabric colours.



Sterling



Champagne



Storm





Turquoise

## AXOPAR AWARDS

Axopar is well known for its hugely successful, multi-award winning range of premium motorboats. Below we have gathered some of the awards that our brand have recieved.



Find you local Axopar dealer at  
[www.axopar.fi/dealers](http://www.axopar.fi/dealers)

 Axopar  Axopar  AxoparBoats

**AXOPAR** 