



## PEARL P95-005 SPECIFICATION

Unit 4 St George's Business Park • Lower Cape Rd Warwick • WARWICKSHIRE • CV34

PEARL YACHTS Ltd. T: +44 (0) 1926 491 069

F: +44 (0) 1926 498 379

E: [info@pearlyachts.com](mailto:info@pearlyachts.com)

*Please note, all details and part specifications in this guide are correct at time of printing.*

*Pearl Yachts Ltd reserve the right to change the equipment or parts without any notice.*



## PRINCIPLE CHARACTERISTICS

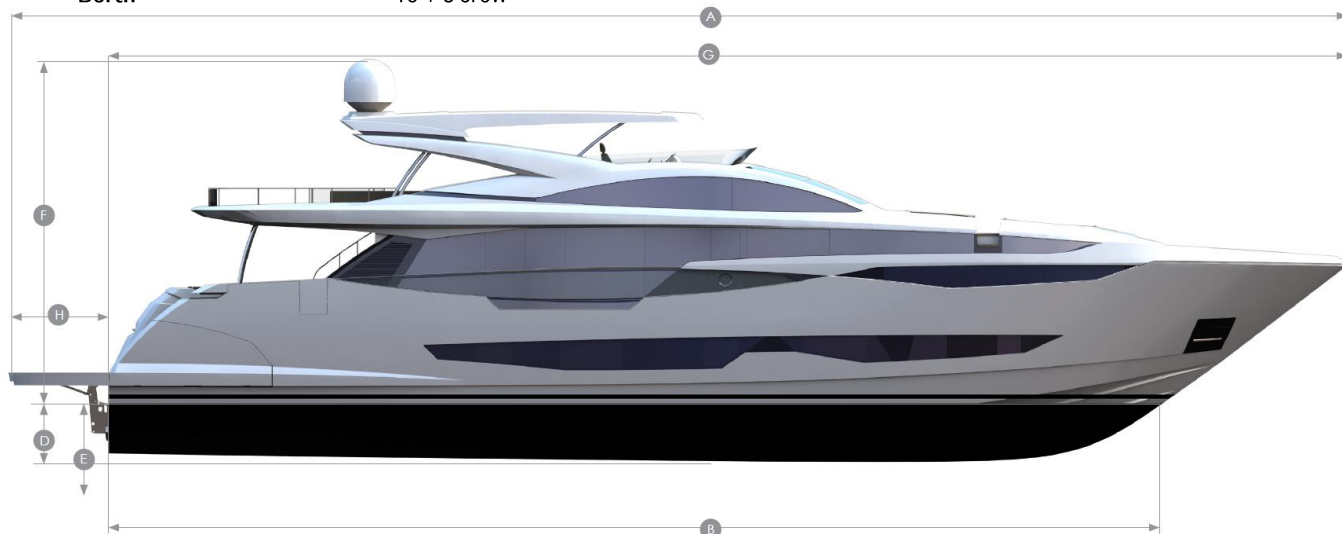
### Construction

- **Type of Craft:** Motorboat
- **Engines:** Twin – CAT C32 (2000hp)
- **Propulsion** ZF Gear boxes with V-drive.
- **Maximum Speed** 25 knots
- **Cruising Speed** 20 knots
- **Range (cruising speed)** 335 nautical miles (estimated)
- **Design Category** MCA RINA “Rules for the Classification of Pleasure Yachts 2020” sub 24m.
- **Hull Type** High speed planning.
- **Construction** Hand laid FRP with Ashland RAL 9003 white Gel coat finish.

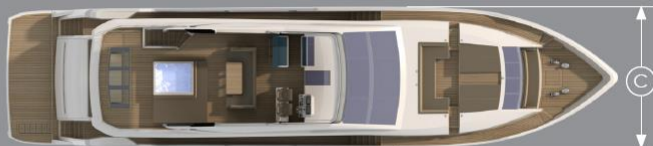
*Performance figures are given in good faith. The loading of the vessel and fouling to the hull, as well as sea state will have an effect on performance. For these reasons we can give no guarantee on performance or range estimations.*

### Overall Dimensions

- **LOA** 95' 10" (29.2m)
- **Hull Length** 76' 1" (23.20m)
- **Beam** 22' (6.7m)
- **Draught** 4' 6" (1.36m)
- **Draught Including Props** 7' 9" (2.06m)
- **Air Draught** 26' 11" (7.9m)
- **Displacement** 95 tonnes
- **Berth** 10 + 5 crew



|   |                   |                |
|---|-------------------|----------------|
| A | Overall length:   | 95'10" (29.2m) |
| B | Waterline Length: | 76' 1" (23.2m) |
| C | Beam:             | 22' 0" (6.7m)  |
| D | Draught:          | 4'6" (1.36m)   |
| E | Draught inc Props | 7'9" (2.06m)   |
| F | Air Draught:      | 26'11" (7.9m)  |
| G | Hull Length:      | 89'2" (27.2m)  |
| H | Platfrom Length:  | 9'5" (2.9m)    |



### Tank Capacities

- **Diesel fuel tank** 2,200 imp gal (10,000 Ltrs), tank is integral to hull of boat
- **Fresh water tank** 352 imp gals (1,600 Ltrs)
- **Holding tank** 154 imp gals (700 Ltrs)
- **Grey water tank** 220 imp gals (1,000 Ltrs)

## DESIGN

### Exterior:

#### Dixon Yacht Design

- **Hull** White gel coat
- **Superstructure** White Gel coat
- **Upholstery** Spradling Tonic - TBC

### Interior:

#### Kelly Hoppen interior design

- "LUXURY" Interior design scheme.
- Wood effect flooring fitted to saloon, dinette, galley, crew mess & raised pilot house.
- Fitted carpets in all cabins.

## LAYOUT & CONSTRUCTION

- Hull, deck and superstructure of PVC or equivalent cored fiberglass.
- Vinyl ester hull laminates and epoxy barrier system applied to hull bottom, with five-year structural and anti-osmosis warranty.
- Bi-axial and multi-axial E-glass reinforcement.
- Double bottom fiberglass fuel, fresh water and holding tanks.
- Fiberglass rub rail with stainless steel capping.

### *Optional Extras*

- *Artwork*
- *Kelly Hoppen collection interior accessories.*
- *5-cabin guest layout incorporating four staterooms on the lower deck and a main deck master*

## SALOON & DINETTE

- Amtico wood effect flooring fitted to saloon area.
- Stainless steel framed electrically operated sliding patio door to aft cockpit
- Sofa seating
- Coffee table
- Scatter cushions
- Dining table with 8 x freestanding dining chairs
- Flat screen television
- five flush mount ceiling speakers and sub-woofer
- Air conditioning
- Drinks cabinet with glassware
- LED overhead lighting (24v)
- Double AC sockets
- Sensor connected to fire detection system
- Table lamp - TBC
- Storage cupboards and drawers
- Semi-electric side opening door to starboard side deck
- Pearl Crockery set: 17 x dinner plate, 17 x side plate, 17 x soup bowl, 17 x mug
- Pearl cutlery set: 17 x knife, 17 x fork, 17 x dessert spoon, 17 x teaspoon
- Pearl glassware: 17 x wine glass, 12 x champagne flute, 12 x whiskey tumbler, 18 x highball mixer
- George Jensen bottle opener set

### *Optional Extras*

- *Stainless steel framed semi electrically operated sliding patio door to starboard side deck*
- *Seaview electric venetian blinds*

## DAY HEAD

- Toilet 24v
- Washbasin
- Tap & accessories (toilet roll holder, soap dispenser, towel ring)
- Mirror
- Extractor fan
- LED overhead lighting (24v)

## MASTER STATEROOM

- Double berth with Sprung mattress
- Storage lockers and drawers
- Bedside cabinets with drawers
- Chelsom folding reading lights 24v
- Designer Mondrian wall lights
- Dressing table
- Dressing table chair
- Desk with drawers
- Air conditioning
- Flat screen television (43") on rise and fall mechanism
- 5.1 surround system with two speakers and sub-woofer
- LED overhead lighting (24v)
- Panoramic windows with round opening port lights
- Double AC sockets
- Sensor connected to fire detection system
- Sargasso opening porthole
- Doors to en suite and walk-in wardrobe
- Walk in wardrobe with hanging illuminated hanging rails and storage lockers
- LED overhead lighting (24v)
- Fitted carpet

### ***Optional Extras***

- *Seaview electric venetian & pleated blinds*

## MASTER CABIN EN SUITE

- Toilet 24v
- Large washbasin
- Taps and accessories (toothbrush and glass holder, soap dispenser, towel rails)
- Separate shower compartment
- Glass shower door
- Bath
- Air conditioning outlet
- Extractor fan
- Mirrored storage cupboard
- LED overhead lighting (24v)
- Sargasso opening porthole
- Shaver socket 240/110v
- Seaview manual venetian blinds
- Door to stateroom

## STAIRWELL AND LOBBY

- Stainless steel handrail
- LED overhead lighting 24v
- AC socket
- Fitted carpet
- Sensor connected to fire detection system
- Display shelves with rope lighting

## PORT FORWARD GUEST CABIN

- Twin berths with sprung mattresses and storage below
- Chelsom folding reading lights 24v
- Wardrobe with illuminated hanging rails
- Air conditioning
- LED overhead lighting (24v)
- Panoramic window sets with opening portlight
- Double AC socket
- Sensor connected to fire detection system
- Flat screen television (40")
- ROKU Tv
- Amplifier connected to 2 ceiling mount speakers
- Sargasso opening porthole
- Fitted carpet
- Door to stateroom

### **Optional Extras**

- *Sliding bunk to make twins into double*
- *Seaview electric venetian blind*

## PORT FORWARD GUEST CABIN EN SUITE

- Toilet 24v
- Washbasin
- Taps and accessories (toothbrush, glass holder, soap dispenser, towel rails)
- Separate shower compartment
- Glass shower door
- Extractor fan
- Air conditioning outlet
- Vanity unit
- LED overhead lighting (24v)
- Seaview manual venetian blind
- Sargasso opening porthole
- Shaver socket 240/110v
- Door to stateroom

## STARBOARD FORWARD GUEST CABIN

- Twin berths with sprung mattresses and storage below
- Chelsom folding reading lights 24v
- Wardrobe with illuminated hanging rails
- Air conditioning
- LED overhead lighting (24v)

- Panoramic window sets with opening portlight
- Double AC socket
- Sensor connected to fire detection system
- Flat screen television (40")
- ROKU Tv
- Amplifier connected to 2 ceiling mount speakers
- Sargasso opening porthole
- Fitted carpet
- Door to stateroom

**Optional Extras**

- *Sliding bunk to make twins into double*
- *Seaview electric venetian & pleated blinds*

**STARBOARD FORWARD GUEST CABIN EN SUITE**

- Toilet 24v
- Washbasin
- Taps and accessories (toothbrush, glass holder, soap dispenser, towel rails)
- Separate shower compartment
- Glass shower door
- Extractor fan
- Air conditioning outlet
- Vanity unit
- LED overhead lighting (24v)
- Seaview manual venetian blind
- Sargasso opening porthole
- Shaver socket 240/110v
- Door to stateroom

**PORT AFT DOUBLE GUEST CABIN**

- Double berth with sprung mattress and storage below
- Storage lockers and drawers
- Bedside cabinets with drawers
- Chelsom folding reading lights 24v
- Dressing table
- Stool for dressing table
- Air conditioning
- LED overhead lighting (24v)
- Panoramic windows with opening port light
- Double AC sockets
- Flat screen television (43")
- ROKU Tv
- Amplifier connected to 2 ceiling mount speakers
- Sensor connected to fire detection system
- Door to en-suite
- Wardrobe with illuminated hanging rails
- Sargasso opening porthole
- LED overhead lighting (24v)
- AC socket
- Escape hatch

- Fitted carpet
- Door to stateroom

**Optional Extras**

- *Seaview electric venetian blind*

**PORT AFT DOUBLE GUEST CABIN EN SUITE**

- Toilet 24v
- Large washbasin
- Taps and accessories (toothbrush, glass holder, soap dispenser, towel rails)
- Separate shower compartment
- Glass shower door
- Extractor fan
- Air conditioning outlet
- Mirror
- LED overhead lighting (24v)
- Opening porthole and Venetian blind
- Shaver socket 240/110v

**STARBOARD AFT DOUBLE GUEST CABIN**

- Double berth with sprung mattress and storage below
- Storage lockers and drawers
- Bedside cabinets with drawers
- Chelsom folding reading lights 24v
- Dressing table
- Stool for dressing table
- Air conditioning
- LED overhead lighting (24v)
- Panoramic windows with opening port lights
- Double AC sockets
- Flat screen television (43")
- ROKU Tv
- Amplifier connected to 2 ceiling mount speakers
- Sensor connected to fire detection system
- Door to en-suite
- Wardrobe with illuminated hanging rails
- Sargasso opening porthole
- LED overhead lighting (24v)
- AC socket
- Escape hatch
- Fitted carpet
- Door to stateroom

**Optional Extras**

- *Seaview electric venetian blinds*

**STARBOARD AFT DOUBLE GUEST CABIN EN SUITE**

- Toilet 24v
- Large washbasin
- Taps and accessories (toothbrush, glass holder, soap dispenser, towel rails)

- Separate shower compartment
- Glass shower door
- Extractor fan
- Air conditioning outlet
- Mirror
- LED overhead lighting (24v)
- Seaview manual venetian blind
- Sargasso opening porthole
- Shaver socket 240/110v

## **GALLEY**

- Sie Matic galley with incorporated storage solutions
- Stainless steel sink
- Galley Faucet
- Stone countertop
- Smoke detector
- Ceiling lights
- Under cabinet lights
- Manual side opening door to portside deck
- 240vAC outlets (4 single GFI)
- Storage lockers

### ***Optional Extras***

- *Seaview electric venetian blinds*

## **GALEY APPLIANCES**

- Miele Built In Built-In Coffee Machine
- Miele Built In ArtLine Oven 60cm Obsidian Black
- Miele Built In ArtLine Microwave Combination Oven 45cm Obsidian Black
- Miele Built In Dishwasher 45cm Fully Integrated
- Miele Built In Built-In Fridge 177 x 56cm White
- Bora Basic Glass Ceramic Induction Cooktop, Recirculation
- 2 x Vitrifrigo DW100 drawer fridge / freezer

## **CREW MESS**

- Air conditioning
- Double AC sockets
- Sensor connected to fire detection system
- LED overhead lighting (24v)
- Seating area
- Table
- Seaview manual venetian blind
- Opening porthole
- Miele WDB020 Eco W1 Front Loading Washing Machine
- Miele TKB640 Heat Pump Condenser Tumble Dryer

## **CAPTAIN'S CABIN**

- Double berth with storage under
- Reading lights 24v



- Air conditioning
- Wardrobe
- LED overhead lighting (24v)
- Double AC socket
- Sensor connected to fire detection system
- Fitted carpet
- Seaview manual venetian blind
- Opening porthole
- Door to en-suite

### **CAPTAIN'S EN SUITE**

- Toilet 24v
- Washbasin
- Taps and accessories (toothbrush, glass holder, soap dispenser, towel rails)
- Separate shower compartment
- Glass shower door
- Extractor fan
- Air conditioning outlet
- Vanity unit
- LED overhead lighting (24v)
- Shaver socket 240/110v

### **PORT CREW CABIN**

- Twin fixed Pullman bunk berths with storage under
- Reading lights 24v
- Air conditioning
- Wardrobe
- LED overhead lighting (24v)
- Double AC socket
- Sensor connected to fire detection system
- Seaview manual venetian blind
- Fixed porthole
- Fitted carpet

### **STB CREW CABIN**

- Twin fixed Pullman bunk berths with storage under
- Reading lights 24v
- Air conditioning
- Wardrobe
- LED overhead lighting (24v)
- Double AC socket
- Sensor connected to fire detection system
- Seaview manual venetian blind
- Fixed porthole
- Fitted carpet

## CREW TOILET AND SHOWER

- Toilet 24v
- Washbasin
- Taps and accessories (toothbrush, glass holder, soap dispenser, towel rails)
- Separate shower compartment
- Glass shower door
- Extractor fan
- Air conditioning outlet
- Vanity unit
- LED overhead lighting (24v)
- Shaver socket 240/110v
- Door to Crew Corridor

## RAISED PILOT HOUSE (RPH) / HELM CONTROL

- HYPRO MARINE electro hydraulic power steering
- Steering wheel
- Glass helm station
- Radar/chart plotter with GPS
- Autopilot
- Depth and speed displays
- Horn control
- Switch panels
- Remote spotlight control
- Trim tab controls
- Rudder indicator
- Digital engine instrumentation
- Fresh water gauge
- Fuel gauge
- Main control and monitoring panel (AC/DC) with generators control
- Monitoring panel for fire detection system
- Windscreen wiper and washer controls
- Glass holder
- Screen demister
- Fire extinguisher
- Sofa seat with table
- Single Besenconi P242 electrically controlled raised pilot house helm seat
- Air conditioning
- LED overhead lighting (24v)
- Double AC socket

### **Optional Extras**

- *Seaview electric pleated blinds*

## NAVIGATION EQUIPMENT

- Raised pilot house glass bridge incorporating Navigation systems:
- GARMIN 3 x GPSMAP 8416, Worldwide Chartplotters
- GARMIN AIS 800 - Class B AIS Transceiver with built in VHF splitter.
- GARMIN Fantom 54 radar
- GARMIN GA38 GPS/GLONASS Antenna.
- GARMIN GPS19x NMEA2000.

- GARMIN GHP Reactor 40 autopilot.
- GARMIN VHF 315i
- GARMIN Smart Sensor Thru-Hull, Depth, Temp, Speed NMEA 2000 235KHz (DST800)
- Compass - Ritchie flush mount 4½" dial

## DECK & EXTERIOR

- Opacmare hydraulic Passerelle 1103/50 (24vdc)
- Trend Marine Sargasso flush fit opening port lights
- Trend marine hull glass – Euro Grey Reflective
- Trend marine above deck glass – Euro Grey Reflective
- 2 x side deck boarding gates
- 2 x side deck balustrades with glass panelling
- Low Level LED deck lights to cockpit, side decks & flybridge
- 3 x Exalto pantograph windscreen wipers
- 2 x coats of International antifoul primer
- 2 x coats of International antifoul

## DECK FITTINGS

- 4 x Stainless steel mid ship bollard style cleats
- Lewmar flush fit master cabin escape hatch
- Stainless steel pulpit and handrails
- Stainless steel ensign pole and socket
- Stainless steel fuel, water and pump out deck fillers

### **Optional extras:**

- *Makefast Bedouin style foredeck canopy with carbon fibre poles.*

## FLYBRIDGE

- Teak decking
- Self-draining cockpit
- Trend Marine custom made flybridge screen
- Upholstered seating areas with stowage under
- Teak dining tables (natural finish) with stainless steel pedestals
- Upholstered sunbathing pad
- Stainless steel aft safety rails with glass panelling
- Low-level flybridge LED lighting (24v)
- Radar arch structure
- Overhead LED lighting on underside of radar arch (24v)
- Two pairs marine speakers (connected to dedicated CD/radio in saloon)
- Flybridge wet bar with the following appliances:
- Kenyon electric Grill
- Webasto drawer fridge
- Webasto Icemaker
- Sink with Hot & cold-water tap
- Fire extinguisher

### **Optional extras:**

- *Flybridge hard top with Makefast electric sunroof*
- *55" TV fitted to Flybridge on rise & fall lifter (behind helm seat)*
- *Flybridge Makefast retractable aft awning*

## FLYBRIDGE HELM

- 2 x Besenconi P242 electrically controlled flybridge helm seats
- Hypro marine electro hydraulic power steering
- Steering wheel
- GARMIN Radar/chart plotter with GPS
- Autopilot
- Depth and speed displays
- Horn control
- Switch panels
- Remote spotlight control
- Trim tab controls
- Rudder indicator
- Digital engine instrumentation
- Fresh water gauge
- Fuel gauge
- Glass holder
- Compass - Ritchie flush mount 4½" dial
- GARMIN VHF GHS11i Full Function Handset with Active Speakers.
- Waterproof plug and socket 12v

## FOREDECK

- Teak decking to side decks and foredeck
- Self-draining side decks
- Foredeck upholstered sunbathing area
- Foredeck upholstered seating area with storage lockers under seating
- Teak dining table with stainless steel pedestal
- Stainless steel side safety rails
- Self-draining anchor chain locker / fender stowage
- Low-level LED lighting (24v)
- Pop Up LED lighting on the side of seating area (24v)
- Two pairs marine speakers
- 2 x Lewmar V8 hydraulic anchor winches with remote brake and chain stopper.
- Anchor winch foot controls
- 2 x 130m of 14mm Galvanised chain plus 3m of stainless chain.
- 4 x Stainless steel bollard style cleats
- 4 x Oval stainless steel fairleads
- Sea water & fresh water deck wash fittings
- Sea water anchor wash down

### ***Optional extras:***

- *2 x 105kg Stainless Steel Hiding Anchors with foot controls*

## AFT DECK COCKPIT

- Teak decking
- Self-draining cockpit
- Aft Cockpit upholstered seating
- Teak table (natural finish) on stainless steel pedestal
- 2 x Stainless steel stern cockpit gates with Pearl logo
- Custom made cockpit to engine room deck hatch

- 2 x Lewmar C6 24vdc electric stern capstans with foot controls
- 2 x Stainless steel bollard style cleats
- 2 x Stainless steel fairleads with roller guides
- 2 x Rope lockers with lig and gas ram
- Overhead cockpit LED lights (24v)
- Low-level courtesy LED lights (24v)
- Storage locker with Fuel shut off controls and fire hose
- Storage locker with 3<sup>rd</sup> statin controls
- Cockpit wet bar with the following appliances:
- Sink with Hot & cold-water tap
- Webasto drinks drawer fridge
- Webasto Icemaker
- Fire extinguisher

## BEACH CLUB & PLATFORM

- Teak decked H&B hydraulic operated bathing platform
- H&B hydraulic operated garage door
- Port and Starboard H&B hydraulic operated side platforms
- Stainless steel jet ski cradle and track system
- Stairs to aft cockpit with teak decking treads
- Stern spring cleats for stern-to mooring purposes
- Stainless steel handrails
- Armstrong telescopic swimming/re boarding ladder fitted to the bathing platform
- Swimming shower – carbon fibre easy connect
- Freshwater marina connection
- GLENDINNING shore power connection

### *Optional extras:*

- *Garage wet bar complete with sink and fridge.*

## ELECTRICAL

- Applied Marine Automation AC/DC electrical control system
- Humphree interceptor trim tabs
- 2 x Torrid calorifier 220ltr 230V 3000w, with Heat exchange
- 1 x Headhunter pump 24vdc X-Calibre water circulating pump
- 1 x Headhunter pump 230vac Mach5 water circulating pump
- 1 x Headhunter pump 24vdc X-Calibre chain wash pump
- KAHLENBERG D-330 air horn, dual tone with dual station control
- MARINCO Precision Wireless Controlled Spotlight, 24 Volt, 100W
- IMCO marine LED navigation lights.
- Tank level monitoring (Fuel, Fresh water, Black water and Grey water)
- Central vacuum system
- Glendenning (CM8) 24V shore power cable master
- 100A dockside primary shore power cable - US
- 50A secondary dockside shore power cable - US
- USA 110V & Continental 220v/240v AC sockets throughout.
- 2 x Victron QUA charger/inverter 24/5000for Domestic and emergency batteries
- 1 x Victron charger 12V/30Amp-3 output for generator start batteries
- 1 x Victron 12/24-400 Battery Combiner

- Batteries (Wired in series & parallel):
  - *Engines Starting:* 4x 12V @140ah AGM Battery= 24VDC 280Ah
  - *Domestic Batteries:* 8 x 12V@260ah AGM Battery= 24VDC 1040Ah
  - *Emergency Supply:* 2 x 12V@260ah AGM Battery= 24VDC 260AH
  - *PORT Generators Starting:* 1 x 12V 105ah AGM Battery =12v DC 105AH
  - *STDB Generators Starting:* 1 x 12V 105ah AGM Battery =12v DC 105AH
  - *Emergency Supply:* 2 x 12v 260ah AGM Battery = 24v DC 260AH
  - *Emergency VHF battery* From the emergency battery through a 24/12 converter
- Cathodic protection
- 6 x 16kg Sacrificial Zinc anodes connected to ships bonding system.
- Individual sacrificial Zinc anodes for Bow & stern thruster, Bathing platform lifters and emergency re-boarding ladder
- Shafts MG-Duff Electro eliminators

**Optional extras:**

- *4 pairs of Underwater lights*
- *Seaview Venetian Electrically Operated Blinds in all cabins excluding crew quarters.*
- *Intellian I9 satellite TV antenna system in 89cm dome*
- *Intellian I9 M9 Dummy dome*
- *Satellite TV decoder 1 required for each television if different channels are to be required at the same time*
- *3/4G on board WIFI*
- *Rear docking lights - TBC*

**ENGINE ROOM**

- FM200 Automated engine room fire extinguisher system linked to the engine room extraction fans, de-misters and the engine ignitions
- Manual fuel shut off valves located in the port side cockpit locker and clearly labelled for each engine and generator
- Halyard engine thru-hull exhausts
- Engine room Intake fans (DELTA) with auto emergency shut down flaps
- Engine room extraction fans (DELTA) fitted with shut down dampers linked to Sea-fire system
- Marine Air Chilled water Air conditioning system
- Side power SID-SH700/412-BA45 hydraulic bow thruster
- Side power SID-SH700/412-BA45 hydraulic stern thruster

**Optional extras:**

- *Sleipner Fin Zero Speed Stabilizer System*
- *Tropical spec reverse cycle chilled water air-conditioning system with smart start.*
- *Upgrade both generators to 2 x 35kw 50hz Kohler*
- *Aquafresh AF190 Water maker*
- *2 x Shore power convertor (ASEA 45kva – 63 amps per phase) in lieu of Isolation transformer*

**WATER SYSTEMS**

**Black Water Systems**

- 8 x Tecma silence plus toilets fed to holding tank
- 700 litre holding tank
- Deck pump out with 50mm pipe
- Breather pipes with charcoal removable filters

**Grey Water Systems**

- 6 x Tecma Sanisplit 24vDC connected to shower and sink units pumped to Grey water tank
- 2 x Jabsco Grey water pumps
- 2 x 500 litre Grey water tank

### **Bilge Pump System**

- 13 x Rule 2000 GPH 24vdc automatic bilge pumps
- 3 x Rule 3700 GPH 24vdc automatic bilge pumps
- 1 x Whale BP0527 42 lpm manual bilge pump in the engine room
- 1 x Whale BP3740 64 lpm manual bilge pump in aft end of the lazarette

## **AV SYSTEM**

### **Flybridge**

- Scout TV Aerial
- AIS aerial
- Pacific LR pro-series 2.5m Am/FM aerial
- 4 x pairs of Marine 8" In-Ceiling Speakers

### **Cockpit**

- 2 x pairs of Marine 8" In-Ceiling Speaker.
- 1 x pair of Marine 2-Way Surface Mount Speaker

### **Foredeck**

- 2 x pairs of Marine 8" In-Ceiling Speaker.

### **Saloon**

- 2 x pairs of 8" In-Ceiling Speaker
- 2 x pairs of 5" Ceiling Speaker

### **Master Cabin**

- Samsung 43" Series 7 Smart 4K UHD TV
- 2 x pairs of 8" In-Ceiling Speaker
- 1 x pair of 5" Ceiling Speaker

### **Starboard & port Double Guest cabins**

- Samsung 43" Series 7 Smart 4K UHD TV
- 2 x pairs 8" In-Ceiling Speaker
- 1 x pair of 5" Ceiling Speaker

### **Raised Pilot House**

- 1 x pair of 6.5" Ceiling Speaker

### **Starboard/Port Twin Cabins**

- slim line 28" Samsung LED smart TV's
- 1 x pair of Crestron Essence IC-6 6.5" Ceiling Speaker

### **Optional extras**

- *Control 4 Integrated Entertainment/control System*
- *24" LED TV fitted in Captain's cabin*
- *32" LED TV fitted in crew mess*
- *65" TV fitted into modified saloon unit*
- *ProofVision 55" Outdoor waterproof TV on rise & fall lifter, fitted on flybridge*

## **EQUIPMENT SUPPLIED LOOSE ON BOARD**

- 8 x inflatable black PVC fenders with 4m of black line
- 2 x 20m STERN LINE Ø32mm
- 2 x 25m SPRING LINE Ø32mm
- 2 x 20m BOW LINE Ø36mm
- 2 x Telescopic boat hook
- 1 x Hose (in engine room)

## SAFETY EQUIPMENT

- 16 x 1kg ABC portable fire extinguishers in each cabin, cockpit, wetbar, helm, crew area
- 3 x Gloria 2kg ABC Powder Extinguisher
- 2 x fire hose, lance & valve
- 2 x Fire Blanket
- Heat & smoke detectors throughout
- 2 x tool kit pouches

### ***Optional extras***

- *CLASS XII SOLAS B safety kit*

## HOTEL EQUIPMENT

- 11 x embroidered towel sets (11 x hand & 11 x shower)
- 6 x Bath Robes
- 5 x beach towels

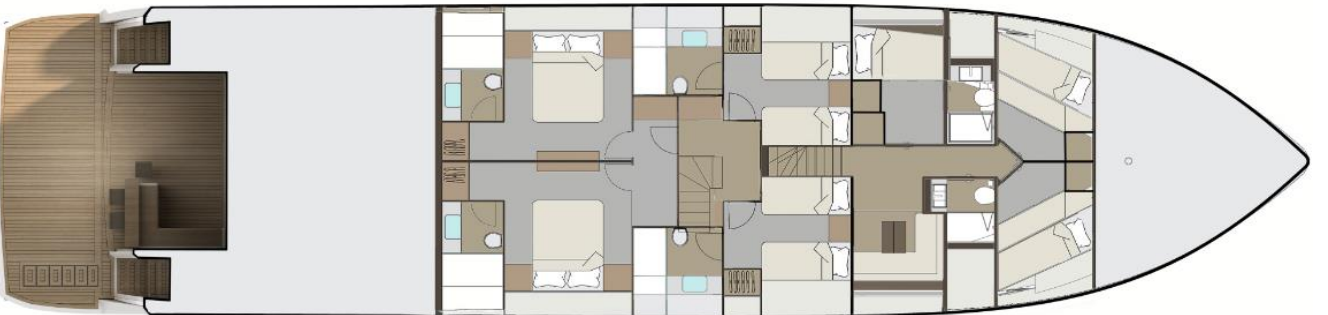
## BOAT COVERS

- Full set of exterior canvas covers in Sunbrella Plus fabric (dark grey)
- 1 x set of mesh windscreen covers

### ***Optional extras***

- *Shrink wrapping of boat for transport from factory*





*Please note, all details and part specifications in this guide are correct at time of printing. Pearl Yachts Ltd reserve the right to change the equipment or parts without any notice.*